

Vg1

Fosbæk, Vangsnes, Venås

Data og kommunikasjon

Vg1 elektrofag

ELFORLAGET

Illustrasjoner til Data og kommunikasjon Vg1 elektrofag

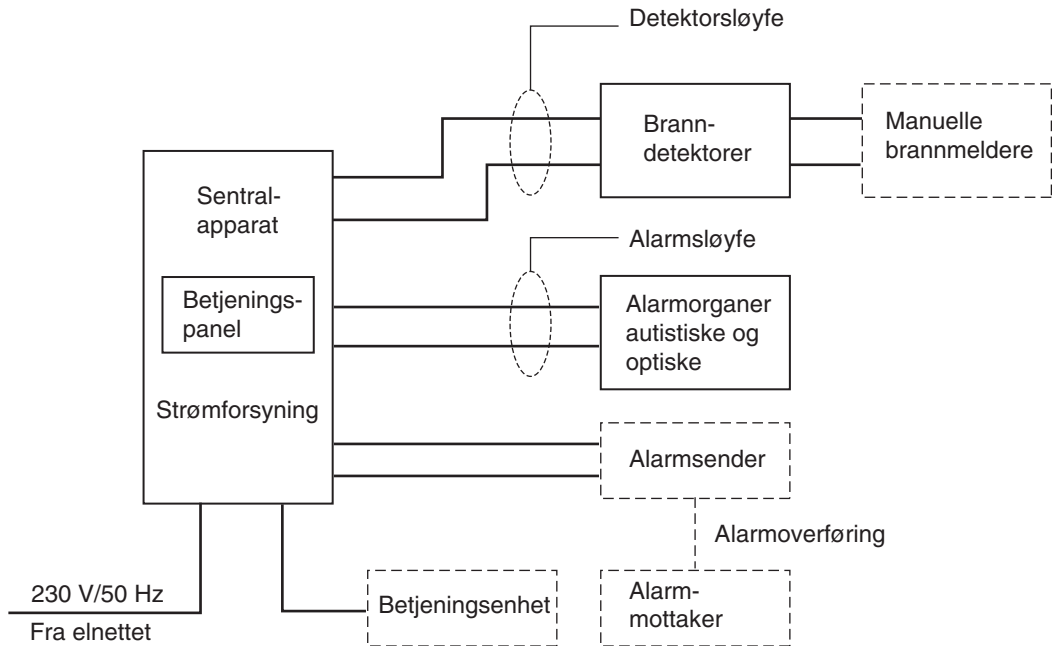
Kapittel 4

Illustrasjonene kan brukes fritt i undervisningen

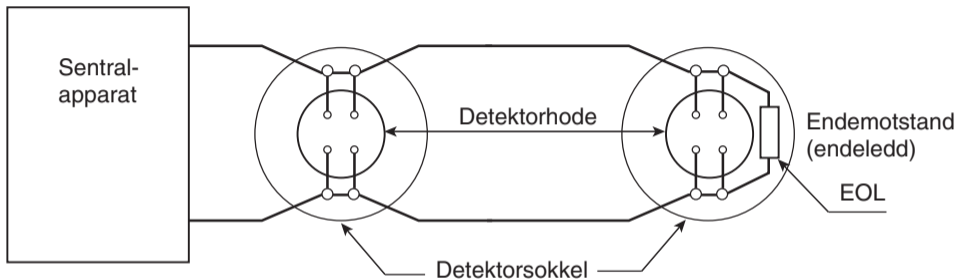
©Elforlaget 2009



Figur 4.1
Brann i bolig



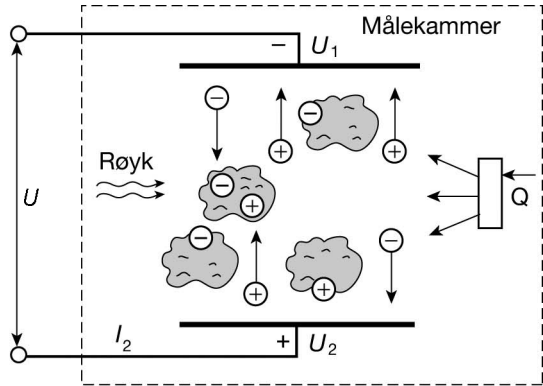
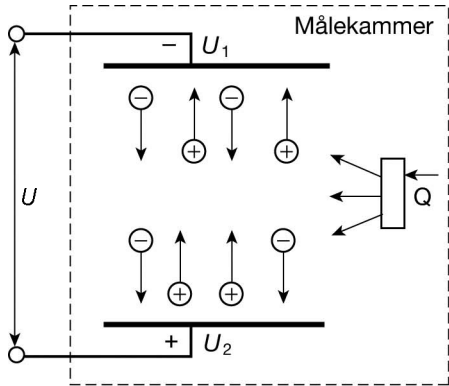
Figur 4.2 Blokkskjema for et trådkoblet brannalarmanlegg for boliger



Figur 4.3
Koblingsskjema for en detektorsløyfe



Figur 4.4
Brann-detektor

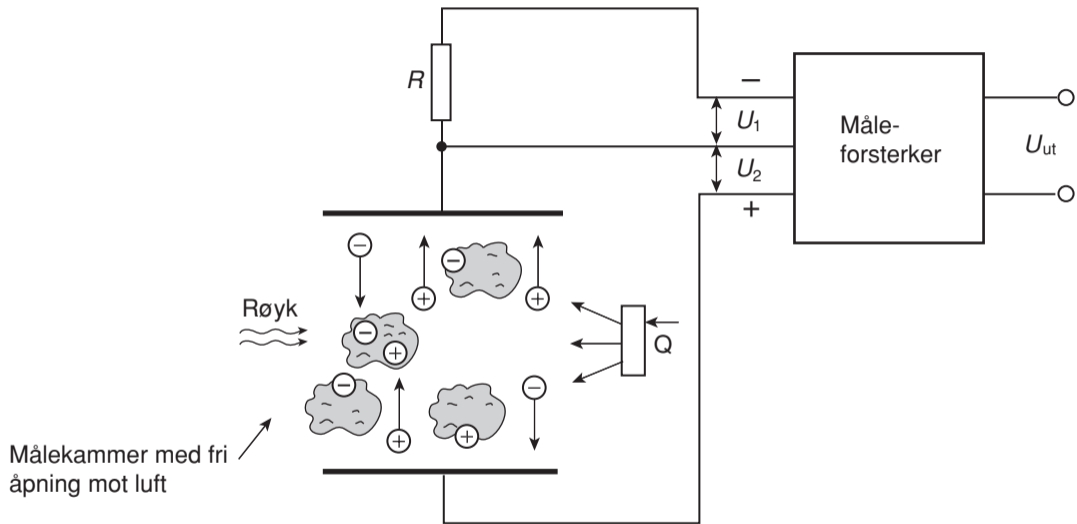


Figur 4.5 Målekammer uten og med røykpartikler

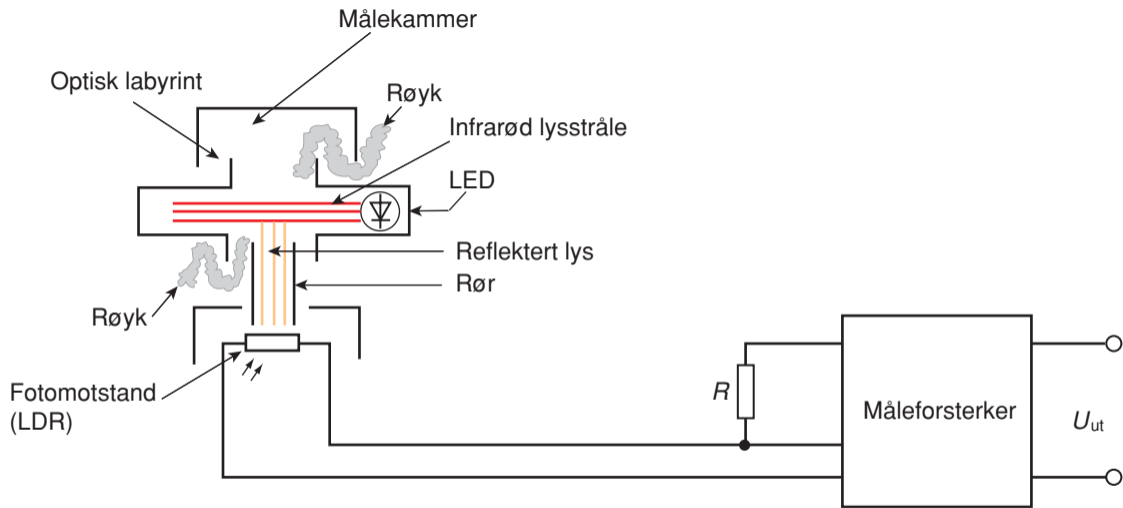


Figur 4.6

Ioniserende røykdetektor



Figur 4.7 Eksempel på hvordan en ionedetektor er bygd opp



Figur 4.8 Eksempel på hvordan en optisk røykdetektor er bygd opp

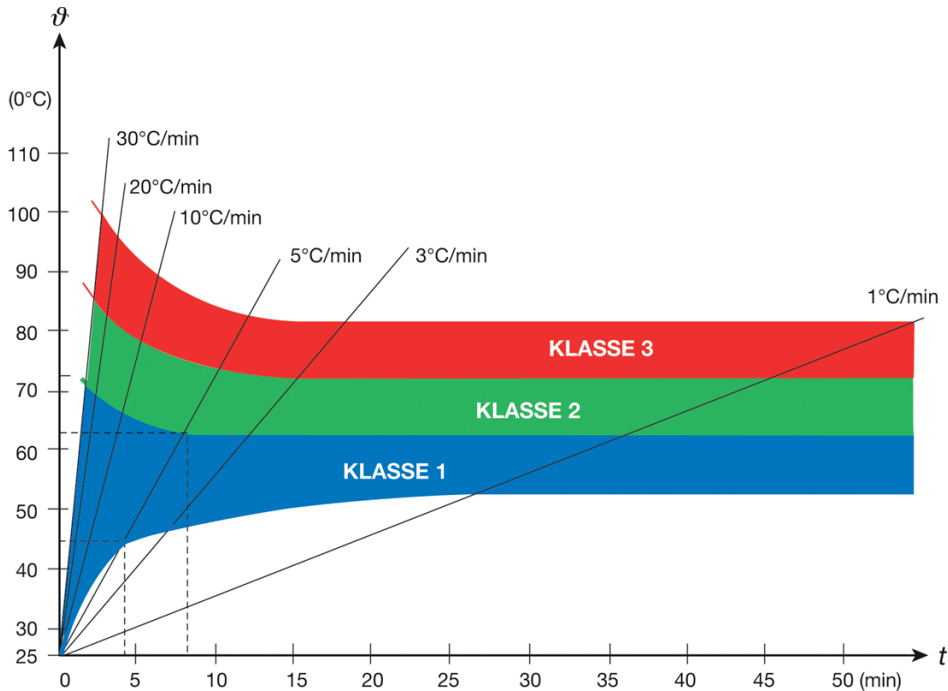


Figur 4.9

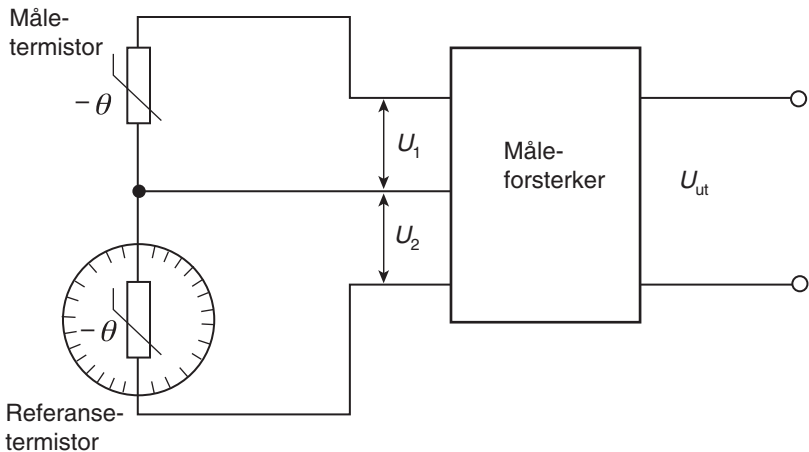
Optisk røykdetektor



Figur 4.10
Varmedetektor



Figur 4.11 Reaksjonstiden for varmedetektorer



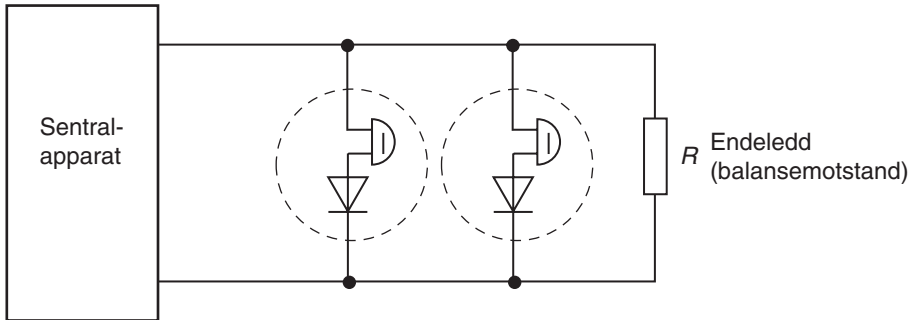
Figur 4.12 Prinsippskjema for en varmedetektor








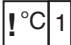
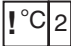
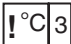










Figur 4.13
Manuell brannmelder



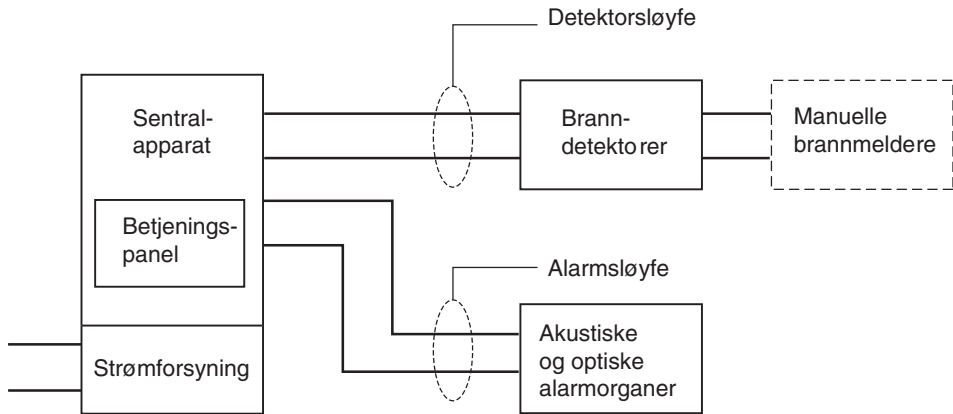
Figur 4.14 Brannklokke og innendørs sirene



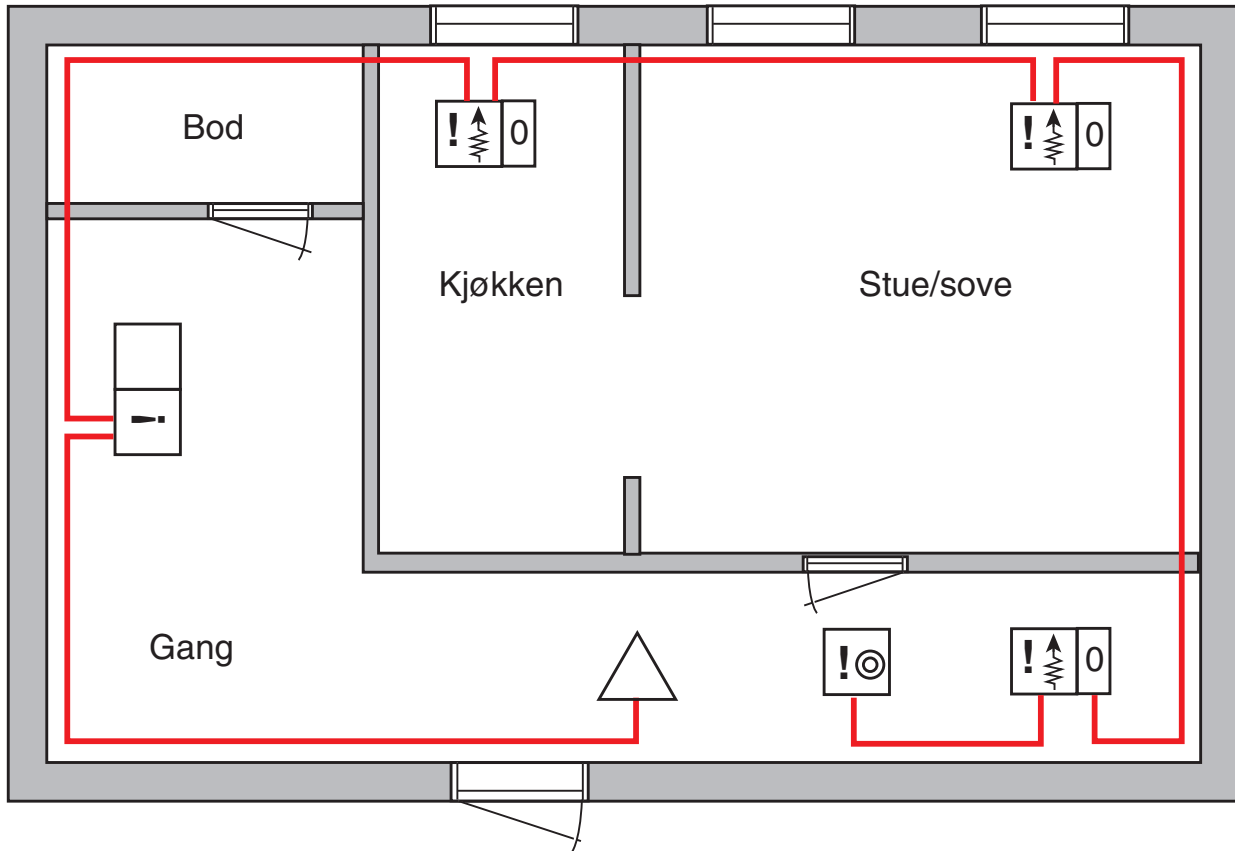
Figur 4.15
Balansert alarmsløyfe

	Brannalarmutstyr, alm. symbol	
	Sentralapparat	
	Brannmelder, vanlig symbol (fellessymbol for meldere og detektorer)	
	Manuell brannmelder med trykknapp	
	Varmedetektor (i stede for °C kan en bruke tall for utløsetemperaturen i °C)	
	Varmedetektor, klasse 1	
	Varmedetektor, klasse 2	
	Varmedetektor, klasse 3	
	Flammedetektor	
	Røykdetektor	
	Ioniserende røykdetektor	
	Optisk røykdetektor	
	Ringeklokke vanlig symbol	 Vekselstrøm
	Ringeklokke for enkelt slag	 Likestrøm
	Summer ("buzzer")	
	Sirene	

Figur 4.16
Anbefalte symboler for brannalarmanlegg

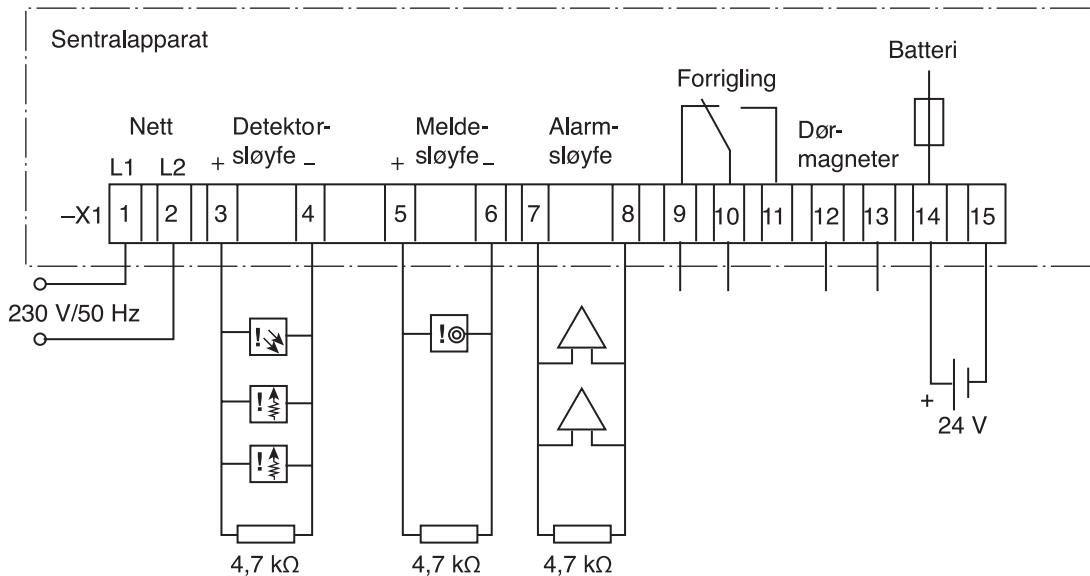


Figur 4.17
Blokkskjema for et brannalarmanlegg

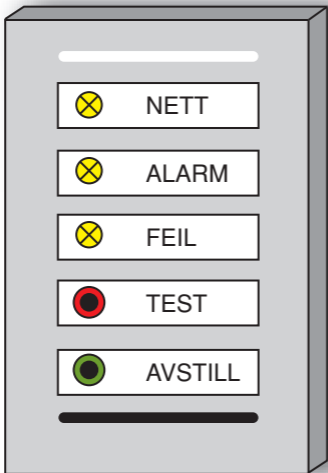


Målestokk 1 : 50

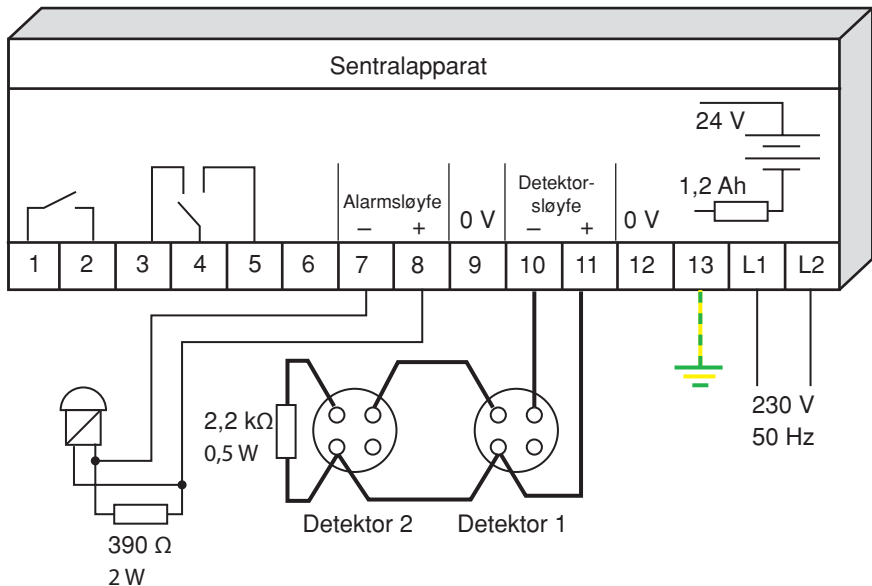
Figur 4.18 Installasjonstegning for brannalarmanlegg, åpen installasjon



Figur 4.19 Koblingsskjema for brannalarmanlegg



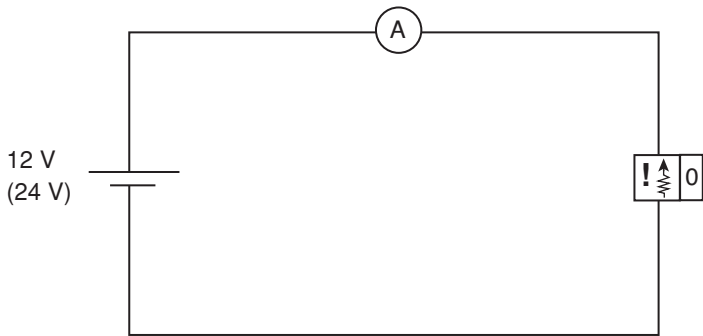
Figur 4.20 Sentralapparat



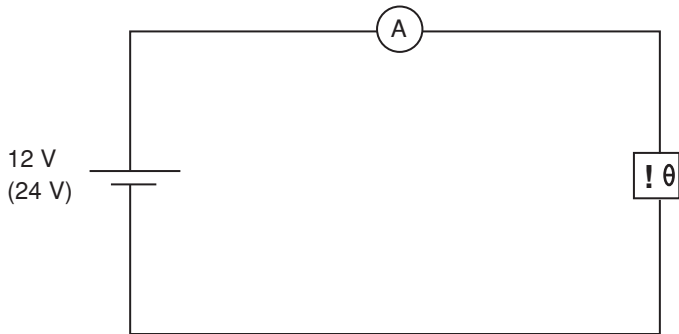
Figur 4.21 Koblingskjema for separat brannalarmanlegg med to detektorer og en alarmklokke



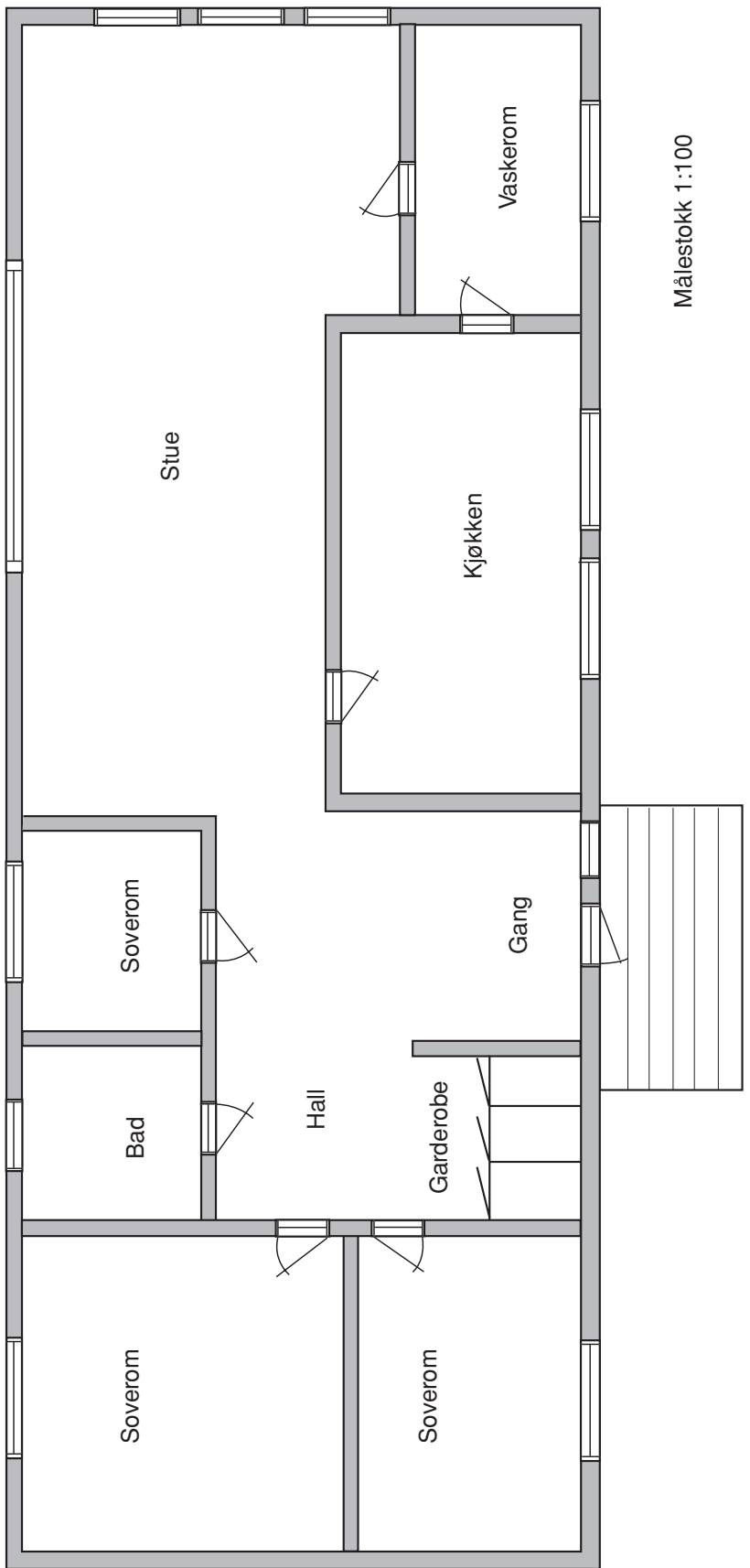
Figur 4.22 Betjeningsenhet for brannalarmanlegg med programmerbart sentralapparatet (kilde: Noby AS)



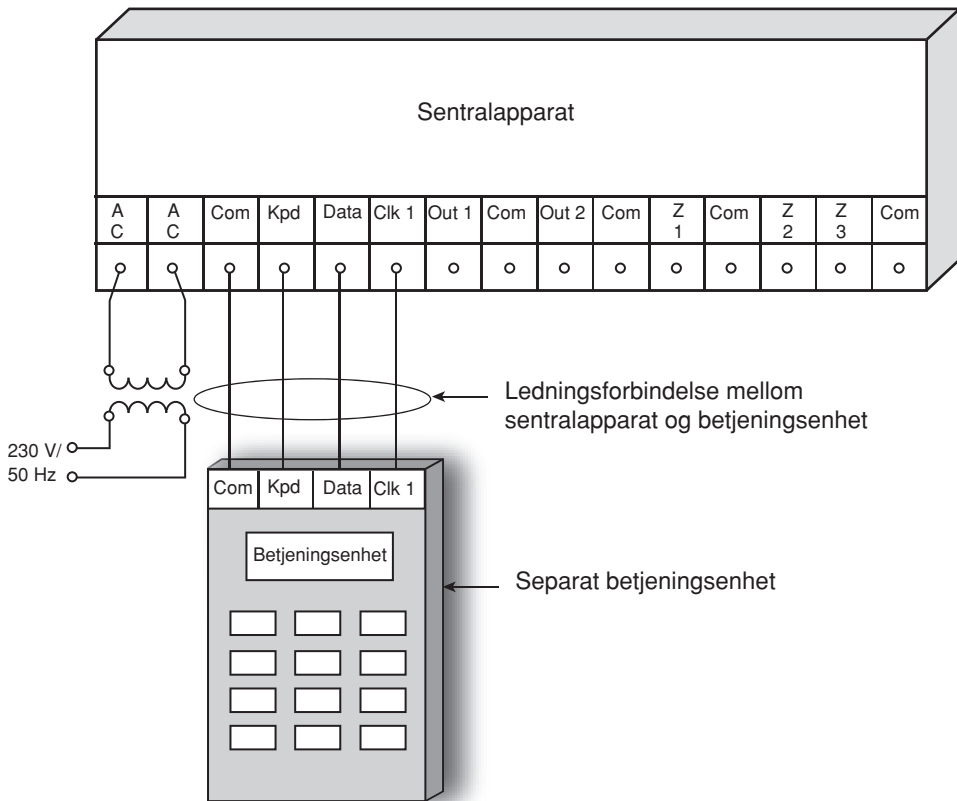
Figur 4.23 Kobling for test av røykdetektor



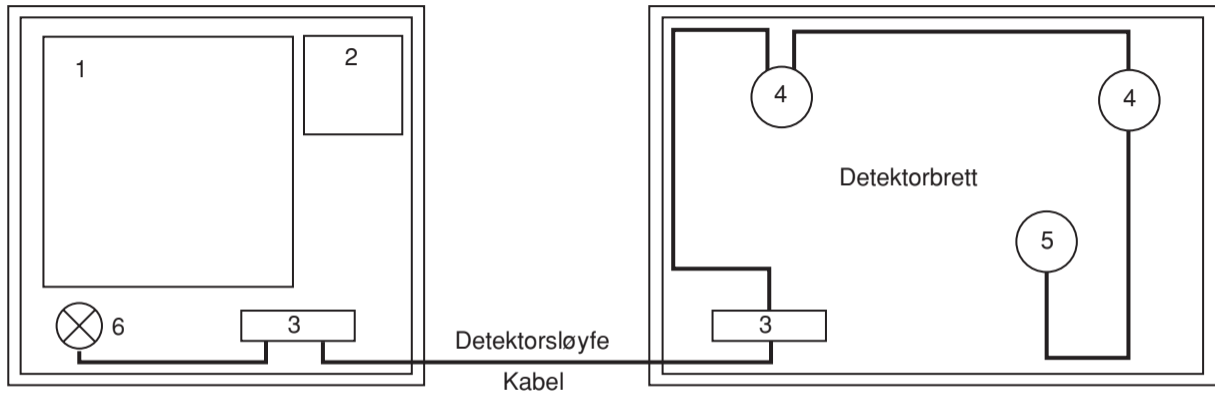
Figur 4.24 Kobling for test av varmedetektor



Figur 4.25 Plantegning



Figur 4.26 Eksempel på tilkoblings skjem



Figur 4.27 Eksempel på installasjon på brett